

CONTENTS

Mission Statement	Page 2
Chairman's Report	Page 3
Chief Executive Report	Page 5
Medical and Scientific Committee	Page 6
Support and Information Services	Page 7
Volunteering	Page 9
Health Promotion	Page 12
Fundraising and Communications	Page 14
Centres in Wellington Division	Page 17
Audit Report	Page 25
Income and Expenditure	Page 26
Summary Statement of Changes of Equity	Page 26
Summary Statement of Financial Position	Page 27
Summary Statement of Cash Flows	Page 27

Improving community well-being by reducing the incidence and impact of cancer

WELLINGTON DIVISION

The Cancer Society of New Zealand Wellington Division

was established in 1929 as a volunteer-based charitable body.

It is managed by a voluntary Executive Committee, a Medical and

Scientific Committee and a staff assisted by many volunteers.

It is based in Wellington, covering the greater Wellington area,

including the Kapiti Coast, the Hutt Valley and surrounding area,

and also has Centres in Nelson, Marlborough and the Wairarapa.

A number of those serving on the committees are from the

medical and research community, enabling the Society to

coordinate closely with these groups in cancer control.

As an independent body, the Society is able to respond quickly

to important developments in the field of cancer prevention

and detection and to work to see that people with cancer get

good care. All funding comes from the community. The Division

receives no direct government funding.

STRATEGIC AIMS

THE STRATEGIC AIMS OF THE WELLINGTON DIVISION ARE TO:

- ❖ BE ACCOUNTABLE TO OUR COMMUNITIES FOR OUR ACTIONS AND ACTIVITIES;
- ❖ DEVELOP AND MAINTAIN EXCELLENT EXTERNAL RELATIONSHIPS;
- ❖ ENSURE THAT MĀORI BECOME A FULL PARTNER IN THE DIVISION;
- ❖ ENSURE THE DIVISION'S RESOURCES ARE UTILISED EFFECTIVELY AND IN ACCORDANCE WITH DONORS' INTENTIONS;
- ❖ STRIVE TOWARDS EXCELLENCE IN MANAGEMENT PRACTICES;
- ❖ MAXIMISE SERVICES WITHIN AVAILABLE RESOURCES;
- ❖ FOSTER MEDICAL AND SCIENTIFIC RESEARCH BY OTHERS IN THE FIELD OF CANCER AND SUPPORT PROFESSIONAL EDUCATION;
- ❖ PROVIDE QUALITY HEALTH PROMOTION AND EDUCATION SERVICES THAT MEET THE NEEDS OF OUR COMMUNITIES WITHIN AVAILABLE RESOURCES;
- ❖ PROVIDE SUPPORT SERVICES TO ALL PERSONS AFFECTED BY CANCER, UTILISING THE SERVICES OF VOLUNTEERS;
- ❖ GENERATE MAXIMUM FINANCIAL SUPPORT FROM THE COMMUNITY THROUGH A BALANCED APPROACH TO MODERN, DATABASED FUNDRAISING TECHNIQUES;
- ❖ USE COMMUNICATIONS TO DEVELOP, PROMOTE AND MAINTAIN A POSITIVE ENVIRONMENT IN WHICH THE DIVISION CAN SUCCESSFULLY ACHIEVE ITS AIMS;
- ❖ ENSURE THE LONG-TERM VIABILITY AND FINANCIAL SECURITY OF THE DIVISION BY UTILISING EFFECTIVE AND EFFICIENT REPORTING, PLANNING AND CONTROL.



The Cancer Society continues to be a leader in reducing the incidence and impact of cancer in our communities. We do this through the provision of support and information services, health promotion, advocacy, and investing in cancer research.

As you will see from this Annual Report, the last twelve months

have been extremely busy and challenging for the Cancer Society.

In this period, over 2,900 calls were answered in Wellington on our 0800 Cancer information helpline, with our experienced cancer nurses ensuring that people have answers to their cancer-related questions and concerns. Our professional staff continue to provide support through counselling and specific support groups (eg the Living Well programme) for those dealing with the impact of cancer.

There have been a number of new initiatives undertaken during the year including a greater focus on Men's Health. Using funding received from the successful Moverember fundraiser, Cancer Society Wellington is leading a national men's health project encouraging men to take better care of their health and to get regular medical checks.

We also know that Māori continue to fare more poorly in terms of cancer statistics than other ethnicities. An initiative "Kia ora -e te iwi" was launched in February. It is a cancer education and support programme for Māori based on our successful Living Well programme. It has been developed by and for Māori and has been positively received.

We continue to support significant cancer research projects in New Zealand. In the last twelve months, over \$600,000 has been provided to support research projects being undertaken in our universities, medical schools and research institutes. There has been huge progress in terms of diagnostic techniques and treatments for cancer, with cancer survival rates increasing by more than 25% in the last two decades.

From a financial perspective, the year has been tough. The ongoing impact of the global economic crisis, the loss of savings by many in finance companies, job insecurity, and so on have made fundraising more of a challenge.

However, New Zealanders continue to give generously to the Cancer Society. We appreciate the wonderful support we continue to receive for Daffodil Day in the spring, Relay For Life events over the summer, and regular mail appeals throughout the year. Thank you also to all our wonderful

sponsors, who enable us keep our costs down. We have also received a considerable number of bequests. Leaving a bequest to the Cancer Society is a special way to support our work, and I encourage all our supporters to think of us when updating your wills.

The demands on the Cancer Society Wellington continue to grow year by year. Rather than cut back on services or programmes we have used some of our reserves to meet those demands in the last twelve months.

In December we bade farewell to Roger Taylor, who had led the Division for some 18 years. Roger oversaw many changes in that time, seeing our services and staff increase significantly across the Division and our Wellington Office upgraded to enable us to better serve the Wellington community. We wish Roger all the very best in his retirement.

In December we welcomed our new Chief Executive, Michael Smith, who comes to us with extensive experience in the not-for-profit sector and a real passion to make a difference for those impacted by cancer.

The Executive Committee looks forward to supporting Michael in the challenges ahead.

I would also like to acknowledge the dedication of the staff across the Division - we have a wonderful team of experienced and very committed men and women.

Thank you to the hundreds of volunteers who support the Cancer Society in numerous ways. A special thank you to our Wellington Executive Committee and sub-committee members and our Centre Executive Committee members in the Wairarapa, Nelson and Marlborough all of whom give of their time freely throughout the year. The expertise and experience they bring to the Cancer Society ensures that we remain focused and on-track in achieving our goals.

Roy Cowley
CHAIRMAN

LIFE MEMBERS

Mr R Byrne
 Dr P J Dady
 Dr A Gray
 Prof. David Lamb
 Lima Watson
 Dorothy Shea

2011/12 EXECUTIVE COMMITTEE

Mr R Cowley (Chair)
 Mr A Southall (Vice Chair)
 Prof. B Delahunt
 Ms L Delany
 Mr T Hall
 Dr D Hamilton
 Dr A Simpson
 Dr D Sarfati
 Ms A McCallum
 Mr P Kerlake
 Mrs J Doherty

GIFT OF TIME AWARD 18 YEARS' DEDICATED SERVICE

ROGER TAYLOR

Since July 1994, Roger has been at the helm of Cancer Society Wellington Division, and considerable progress has been made in many spheres during his 18-year tenure. Margaret Stewart House was opened in 1997, whilst mid-term Richard Evans House underwent a refit followed by a major renovation in 2009 necessitated by the growth of the Division's activities and corresponding staff increases.

The wealth of new programmes, projects and activities characteristic of Wellington Division and its three Centres has been made possible by Roger's respect for the skills and expertise of his staff and his trust in their judgement, passion and commitment. His open-door policy, and his willingness to support new initiatives proposed by staff has been empowering - giving many of us wings(!) - but more importantly it has been beneficial to the whole community of cancer care. Roger's faithful representation of Wellington Division nationally has also served us well, as has his nurturing of pertinent relationships within Capital Coast District Health Board, the Ministry of Health, and the community and voluntary sector.

We will all miss Roger's wry sense of humour, his attentiveness and generosity, patience and support.



It's a privilege to be working for the Cancer Society - one of New Zealand's most trusted charities. Since joining the Society, just before Christmas, I have been made to feel very welcome by staff, volunteers and clients.

Unfortunately, cancer touches us all in some way during our lives - be it through our own diagnosis, or that of a family member, friend, or work colleague. The Cancer Society is committed to reducing the incidence and impact of all types of cancer. As highlighted in this Annual Report, we do this in a number of ways; through the provision of support and information services, through health promotion and advocacy work and significant investment in cancer research.

We receive no direct government funding and so we undertake our work through the generosity of individual donors, sponsors and large team of volunteers.

Volunteers are a precious resource for the Cancer Society - be they volunteer drivers, hospital ward volunteers, Daffodil Day collectors, or Relay For Life team captains.

This annual report provides an insight into how some of our volunteers support our work. A special thank you is due to all our volunteers and supporters.

I have inherited a great team of staff and volunteers and I also acknowledge the work of my predecessor Roger Taylor, who retired at Christmas after giving 18 years of service to the Cancer Society.

There are many challenges ahead, including meeting the increasing demands for our services, health programmes, and research funding, and one of my immediate priorities will be seeking ways to expand our fundraising income. I also intend to follow up ways to reach all sections of our community and to collaborate closely with like-minded organisations.

Thank you for your support.

Michael Smith
 Chief Executive



The Opening Ceremony at the Porirua Relay For Life, 2012

One of the highlights for me this year was the opportunity to see and hear presentations from many of the researchers and research programmes that this Committee has supported with grants for many years. The venue for this was the New Zealand Society of Oncology annual scientific meeting, held in Wellington in early May. The standard of presentations from researchers from the Malaghan Institute, Victoria University of Wellington, and Wakefield Biomedical Research Institute was high; they covered topics of immunology, proteomics and genetics in relation to cancer therapy, detection and prognosis. The Committee also contributed to the meeting in supporting the presentation of one of the keynote speakers, Professor Neil Watkins from the Monash Institute of Medical Research in Melbourne.

Another highlight of the year was an appointment to the CT Collins Fellowship for PhD research students of cancer-related topics. Mr Rami Al-Jiab will be funded for his PhD research subject of "Genetic analysis and comparison of biological effects of peloruside, laulimalide and paclitaxel."

Once again the majority of the Committee's budget of \$570,000 went directly to the National Office of the Cancer Society for allocation to funding nationally approved research projects. Our remaining budget is spread between, on the one hand, local research ranging from epidemiological, to qualitative and behavioural, to laboratory, and, on the other, funding of conference attendance, cancer-focused summer student projects (3 this year) and the Medical Library.

This is all administered by the Secretary of the Committee.

This year the Committee said farewell to Roger Taylor, who had been its Secretary since 1993, and I wish him well in his retirement.



Following in Roger's footsteps, the new Chief Executive of Wellington Division, Michael Smith, has taken on the role of Secretary, and we look forward to many years of working with him.

The Committee has excellent representation from many fields of biomedical research, with experts volunteering their time and expertise in serving the Wellington Division in the prudent and appropriate allocation of the money donated to it by the people of the Greater Wellington Region. I would like to extend my thanks to the donors and the Committee members for all their contributions.

Dr David Hamilton
Chairman

MEDICAL AND SCIENTIFIC COMMITTEE

Dr D Hamilton (Chair)

Dr A MacLennan

Dr T W Jordon

Dr A Simpson

Dr F Ronchese

Dr Diana Sarfati

Dr D Ackerley

Dr M McConnell

For Cancer Society Wellington, the Cancer Information Service (CIS) is essentially a portal to accessing supportive care services. Providing the public with accurate, up-to-date information on cancer throughout our region is a priority. People facing cancer need clear, reliable information in order to understand their disease and make informed decisions about their health.

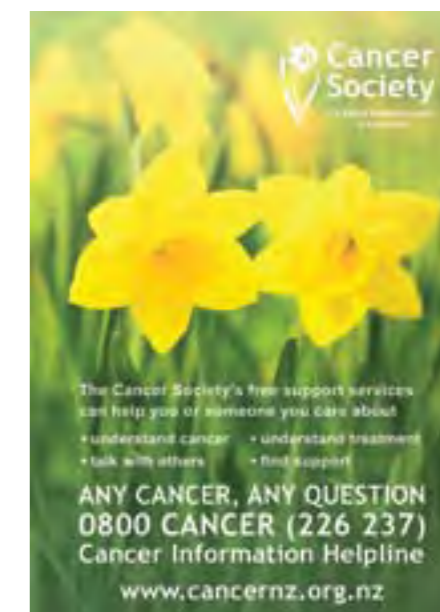
The Cancer Information Service offers information about cancer and support services to cancer patients, their family and friends, the public and healthcare professionals. Trained information specialist nurses provide one-on-one interaction by telephone, email, internet message board, or in person. These experienced nurses are available during weekdays to answer questions about cancer, link callers with resources in their communities, and provide information on local events and programmes. The Society can also help people who speak languages other than English to find the assistance they need. The service is free and confidential.

The model of supportive care which underpins the service can be defined as a system of service planning, development, delivery and monitoring, informed by government strategies, guidelines and guidance, and the Cancer Society NZ's Strategic Plan and Standards for Support Services Delivery. All our services are based on evidence and international best practice, and the Cancer Information Service is a member of the International Cancer Information Services Group (ICISG).

The Society publishes a large number of patient education booklets, information packs, and pamphlets to help patients, families and health care professionals, providing answers and guidance at the time of diagnosis. These include booklets on specific cancer types and coping issues. In 2011 the Cancer Society's Editorial Team won two major awards in the New Zealand WriteMark Awards, winning the Best Team in the Plain English Champion category and the Best Plain English Document for the booklet Bowel Cancer and Bowel Function.



Our website www.cancernz.org.nz offers a wide range of booklets and fact-sheets. CIS nurses also moderate www.cancerchatnz.org.nz, our on-line network and discussion forum for patients and caregivers, and broker connection to Cancer Connect, peer linking by telephone. They are responsible for editing CanTalk - our quarterly magazine for patients and carers.



The Cancer Information Helpline **0800CANCER** is considered to be a significant entry point for all services offered by the Cancer Society. Experienced cancer information nurses answer questions about all aspects of cancer, including prevention, early detection

and treatment. They also assist with practical and emotional support, offer advice, and link callers to specific services appropriate to their needs and location. Information can be mailed out to callers. We know that callers mainly need information to understand their situation more clearly and for peace of mind - not just to make treatment choices. In the last twelve months there have been 2,927 calls to the Helpline, ensuring that people have answers to their cancer-related questions and concerns. Nearly half of the callers were cancer patients, and a further 24% were family, whānau, or friends. Over 80% of callers were women, and half of all calls were about breast cancer.

Cancer Society Wellington has provided support services since the mid-1980s and the range of services has steadily grown as the staff strive to fulfil the support needs of people with cancer, their family, whānau, carers and friends. These services (based on the Te Whare Tapa Whā principle - a person-centred, culturally appropriate and holistic approach) are designed to ensure that those affected by cancer are well-informed, cared for and supported from the time of diagnosis, throughout their treatment, and as long as required post-treatment. Services are provided by Cancer Society staff in Wellington, Wairarapa, Marlborough and Nelson together with a huge number of well-trained volunteers. Clients value having an

independent source of credible information, being linked to others in similar situations, having time to talk through information received, and being supported emotionally and assisted in survivorship. Cancer Society Wellington values the generosity of many health professionals who contribute to the work we do through their advice, participation in workshops, seminars and support of other initiatives that the Cancer Society engages in. We value this partnership.

Fiona Pearson
Manager Support & Information

The Cancer Society's Taonga

The 10th anniversary of the International Year of Volunteers was marked in 2011 by the first ever UN report on volunteering. Helen Clark, UNDP Administrator, noted that volunteering occurs in every society in the world: "a society which fails to recognise and facilitate contributions of volunteers deprives itself of contributions to public well-being which could be made."

To mark IYV + 10, the Cancer Society's six Managers Volunteering commissioned a waiata, **Tōu Aroha**, to honour the generosity of spirit of volunteers, releasing it to coincide with International Volunteer Day, 5 December 2011.

Life Membership of Cancer Society Wellington has traditionally been reserved to recognise Policy Volunteers in their governance role. For the first time Programme Volunteers, **Dorothy Shea** and **Lima Watson**, whose combined years of service exceed eight decades, were accorded this honour. Both volunteers had leadership roles in Kapi Mana Auxiliary overseeing fundraising, with funds dispersed locally for equipment and cancer health care projects. They also saw the initiation of two local volunteer-delivered patient support services, a driving service, and a patient and family visiting service. Their seamless web of volunteering continues, as both maintain an active interest in fundraising and promoting the Society in their respective Retirement Villages. They are two of the Society's *Living Treasures*.

The role and contribution of time, resources and goodwill by volunteers should never be underestimated. It is a renewable resource, powerful and yet, at times, an underutilised asset. Cancer Society New Zealand's *Standards for Engagement of Volunteers*, supplemented this year by

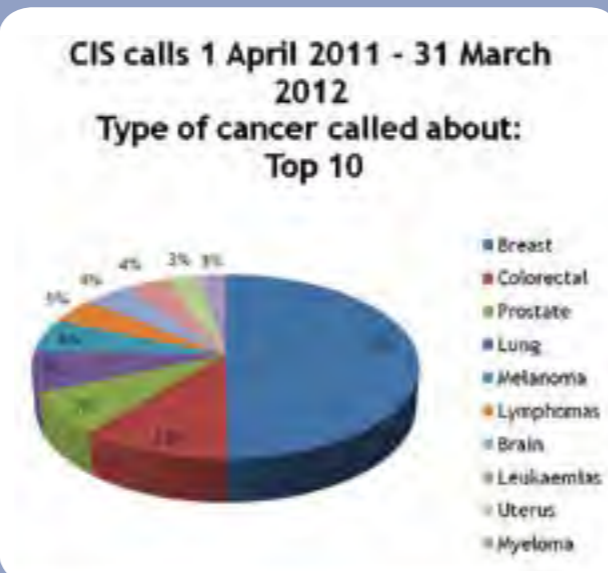
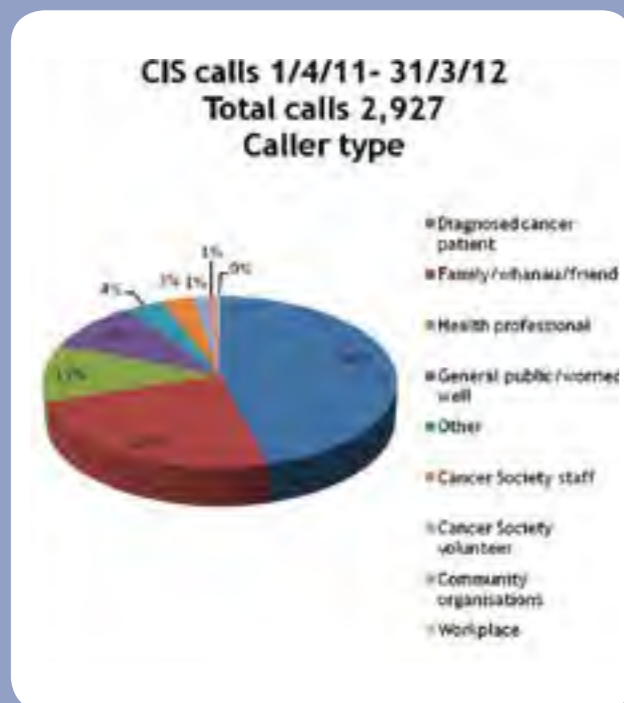
the Volunteering Management Manual: *Successfully Engaging with Volunteers*, coupled with paid staff trust and respect for volunteers' competence and commitment, provides a supportive and nurturing structure to realise the potential that volunteers have to make a real difference.

Daily, somewhere, informed, trained, dedicated volunteers focus community attention, effectively engendering interest and initiating contact with the Society, its services and programmes. It can occur directly through volunteer-delivered patient services, in community-based health promotion roles interfacing with diverse communities, or via national fundraising events, Auxiliary or individual initiatives. Indirectly governance and administrative volunteers provide essential support to innovations.

In this financial year, initiatives from within the Society or from the local community have seen volunteers directly linked still more closely to the accomplishment of the Society's Mission. Consultation with staff, assistance with the design, implementation of training and resources, the supervision, on-going direction, evaluation and feedback have culminated in additional meaningful work for volunteers and opportunities to achieve greater impact for the Society.

In particular the establishment of four new teams:

1. CanWork, a dynamic programme set up to promote men's health and wellness within workplace settings, depends on Men's Health Ambassadors, key contact persons, informal volunteers, in an organisation with a leadership, or occupational health and safety role, augmented by volunteer **CanWork Community Champions**, in smaller workplaces and community organisations. Guidelines for Ambassadors have been established and a National Training for volunteers was held in September 2011.
2. Inspired by the impact of volunteers in the Day Ward of Wellington Blood and Cancer Centre, Wellington Regional Hospital, two additional teams of hospital-based volunteers were recruited, at the behest of staff.
 - **CanWait Volunteers** contribute to the well-being of people affected by cancer and undergoing treatment, by creating an empathetic and supportive environment during their waiting time in the out-patient Day Ward.
 - On Ward 5 North, **CanBe Volunteers** are present primarily for in-patients, their families and caregivers, and to undertake services for them complementing those provided by health professionals.
 - The provision of distinctive polos and/or blouses for hospital volunteers has enhanced their presence and strengthened their role.



Afternoon tea hosted by *Summerset Aotea Retirement Village*, 16 November 2011, **Dorothy Shea** and **Lima Watson** surrounded by fellow volunteers and staff. Front row, Left to Right: **Jean Craig**, **Dorothy Shea**, **Lima Watson**, **Elsie Bolton**. Back row, Left to Right: **Fiona Pearson**, *Manager Supportive Care*, **Margaret Wake**, **Linda Wood**, **Gwyn Skinner**, **Jennifer Dickinson**, **Janet Scherf**, **Alison Burns**, **Beverley Johnson**, **Betty Watson**, **Ann Hodson**, *Manager Volunteering*.

3. To meet the ever-increasing demand for silky pillows and to supplement the work undertaken by Plimmerton Inner Wheel, a team of **Silky Pillow Volunteers** has been established.

New roles continue to evolve from individual volunteer or group initiatives offering skills to fill hitherto unmet needs.

As a volunteer-involving organisation, Cancer Society Wellington enables people to play a fuller and more satisfying role in their communities. In turn, this can transform volunteers, increasing their confidence; developing new skills and competencies; giving them a strong sense of personal accomplishment. The benefits can be substantial and enduring. The more an individual benefits personally, the greater the ripple effect in the community they serve.

The International Volunteer Day Reception held at The Academy of Fine Arts was another opportunity to recognise 10 volunteers who exemplify this very *Spirit of Volunteering*. A *Reflection: Volunteering Faith in Action* was held at St Joseph's Church, Wellington, during

Volunteer Awareness Week. This was an opportunity to celebrate **Mary Byers'** true *Spirit of Volunteering*.

Don Butcher, Dorothy Carmody, Gisela Collor, Mal Fyfe, Jenny Harris, Jean Henry, Ron Mason, Annabel McCallum, Jacob Misitea, and Margaret Scott are 'modest volunteers who are distinguished by the degree of their commitment and perseverance to designated tasks, their reliability, their constructive attitude to their role or roles and their high standard of work. These volunteers are identified by their accommodating and genial engagement with staff and fellow volunteers, and their marked loyalty to the Cancer Society.'

VOLUNTEERING IS LIFE-CHANGING FOR BOTH VOLUNTEERS AND THOSE WHOSE LIVES THEY TOUCH. VOLUNTEERING IS UNDOUBTEDLY ONE OF THE SOCIETY'S GREAT SUCCESS STORIES.

Ann F Hodson
Manager Volunteering

GIFT OF TIME AWARDS 2011

TOTAL YEARS: 565

5 Years Service

Leanne Arker
Patricia Bailey
Chia-Ying Chang
Barbara Clark
Denny Davidson
Willem du Preez
David Dunnett
Karen Henry
Jane Page
Rachel Purdom
Jocelyn Stephenson
Donna Stewart
John Thomson
Glenda Young
David Yu

10 Years Loyal Service

Brian Barton
Allison Chappell
Faye Deakin
Sheryl Earnshaw
Wendy Harnett
Jenny Harris
Kath Kerr

Margaret Lynch
Ian MacDonald
Mary McCartan
Paul McEnaney
Jacob Misitea
Sue Ongley
Pauline Poi
Margaret Scott
Maureen Starke
Marjorie Veerkamp
Stephanie Crouch

15 Years Dedicated Service

Margaret Ashford
Joyce Castle
Lorraine Christie
Jan Cotton
Dick Dunkley
Dawn Ellen
Fionna Glasse
Geraldine Lyndhurst
Rosemary O'Neill
Tony Southall

20 Years Outstanding Service

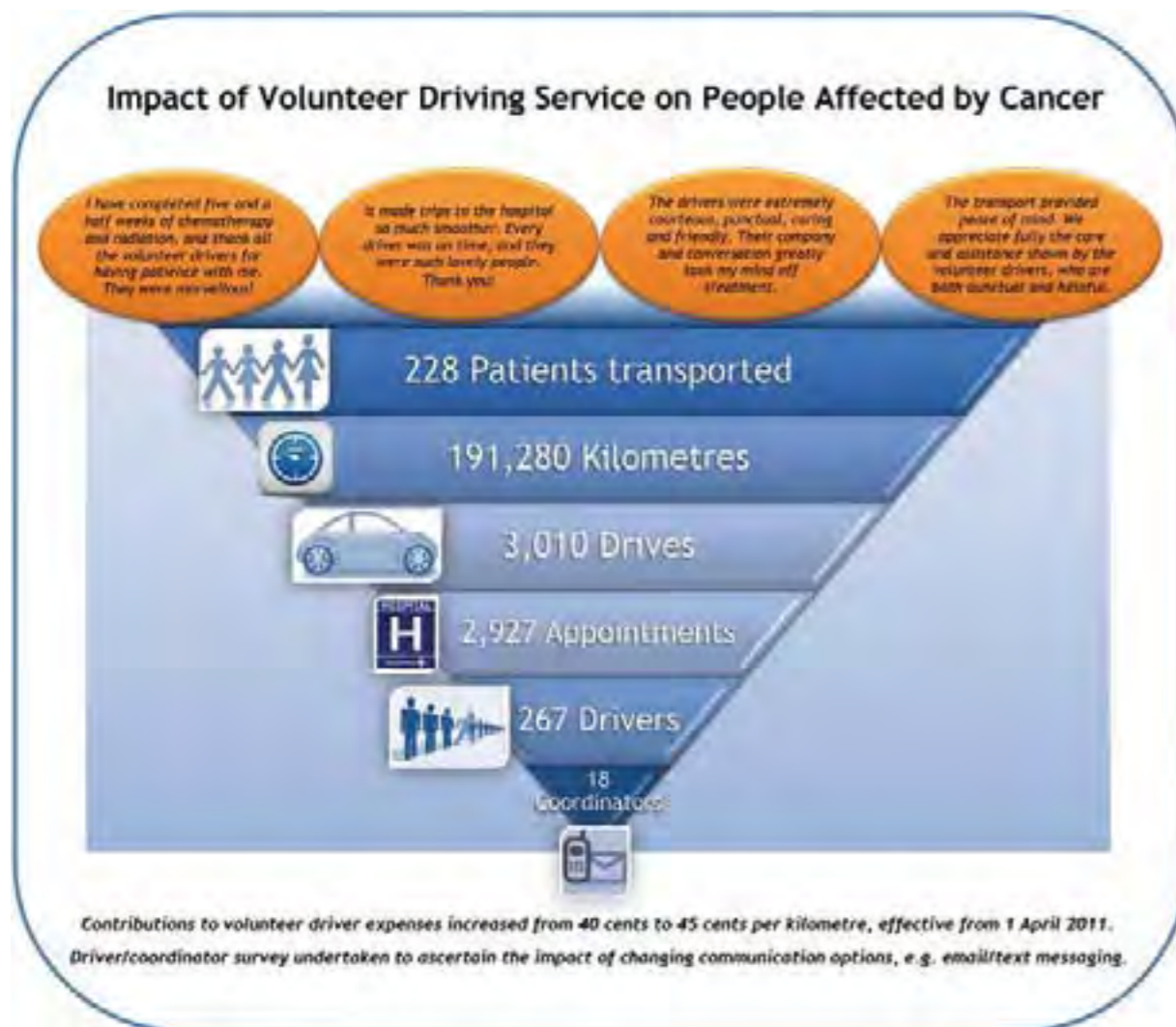
Lois Clark
Hannie Crawford-Holscher
Stella McCrorie
Euphemia Ross

25 Years Exceptional Service

Betty March
Pamela Nicholson

Spirit of Volunteering Award

Don Butcher
Dorothy Carmody
Gisela Collor
Mal Fyfe
Jenny Harris
Jean Henry
Annabel McCallum
Ron Mason
Jacob Misitea
Margaret Scott



Health Promotion

Health Promotion is the process of enabling people to increase control over, or improve their own health (The Ottawa Charter, World Health Organisation, 1986)

In light of the World Health Organisation's definition of Health Promotion, for this year's annual report we want to focus on the activities of some of our community partners. Our experience has shown that the passion and commitment to health promotion principles within our own organisation are mirrored in many community groups and organisations.

Collaboration with these motivated organisations and individuals enables the Health Promotion team at Cancer Society Wellington to effectively share our resources and support a wider cross-section of the community in an appropriate and effective way. Through these initiatives, people will hopefully improve their own health and in turn positively influence those they care about within their communities, workplaces and whānau.

Kina's Krew Dragon Boat Team

Kina's Krew Dragon Boat Team was established by the late Maurice 'Kina' Cowan as an activity to raise awareness about prostate cancer amongst his own family and friends.

Team captain Jason Tangianau explains that "this team is more than just raising awareness, it's about prevention - walking the talk by empowering and supporting the men in our own families to live healthier, longer lives - and hopefully inspiring others to do the same".



Dragon Boat Team

Providing adequate advice and an opportunity to engage with health providers is a priority for Kina's Krew. They achieve this by dispersing health promotion messages throughout each year's three month training programme. This family's initiative is another example of health promotion in action.

Partnership with Wellington Basketball

Cancer Society Wellington in partnership with Wellington Basketball Association (WBA) have this year focussed on their primary and secondary school leagues. This has provided an opportunity to reinforce SunSmart messages for the primary league, linking to the SunSmart schools programme and to Smokefree key messages for secondary students in a positive and sport-focused environment. WBA in turn supported Relay For Life and led the way in the Smokefree lap.



Smokefree Lap at Relay For Life

Mates Paddle for Life

On Friday 2 March, friends, community and extended whānau paddled an outrigger canoe in Wellington Harbour, 48 laps of a 2 km circuit, to honour and celebrate the life of Tere Kiriau, 48years.

Paddle for life is an example of the Ottawa Charter in action.

- Strengthening community action
- Developing personal skills
- Re-orienting health care services toward prevention of illness and promotion of health.

The momentum and power of this initiative was instigated by Tere and Numa Kiriau in the hope that sharing their cancer journey would help raise awareness of men's health issues and cancer prevention. Mates paddle for life is a legacy for Tere and also will become an annual focus for the Cook Island and paddling communities for years to come.

CanWork - Men's Health & Wellness programme - www.getthetools.org.nz

CanWork began as a workplace-based men's health initiative. The project is designed to promote men's health and wellness within workplace settings and to strengthen participants' awareness of men's health and cancer-related issues.

Following very positive feedback from evaluations of the pilot programme with Mitre 10 Mega Petone & Upper Hutt, CanWork received further Movember funding which has enabled the programme to be offered nationally and to support a volunteer training component. The involvement of trained volunteers in community-based men's health initiatives and the presence of more men promoting the key messages is shown to be very effective.

A further redevelopment of the website is in progress and will strengthen the supportive care and survivorship tools and information and demonstrate a broader focus with links to partner organisations such as Mental Health Foundation, Prostate Cancer Foundation, and Men's Shed.

DON'T DELAY - CHECK OUT THE TOOLKIT TODAY! WWW.GETTHETOOLS.ORG.NZ



Mates Paddle For Life

FUNDRAISING & COMMUNICATIONS

We are tremendously grateful to everyone who chose to donate to the Cancer Society Wellington Division during the past financial year.

The Society does not receive any direct financial support from the Government and we rely solely on the goodwill of the community for funds. Given the importance of our role in cancer research, patient care, cancer prevention and education, our income development needs to be diverse and effective.

Our challenge is to find new ways to make the donated dollar go further without affecting the quality of service delivery. More and more, we are looking beyond traditional fundraising approaches to find other effective ways to increase our income.

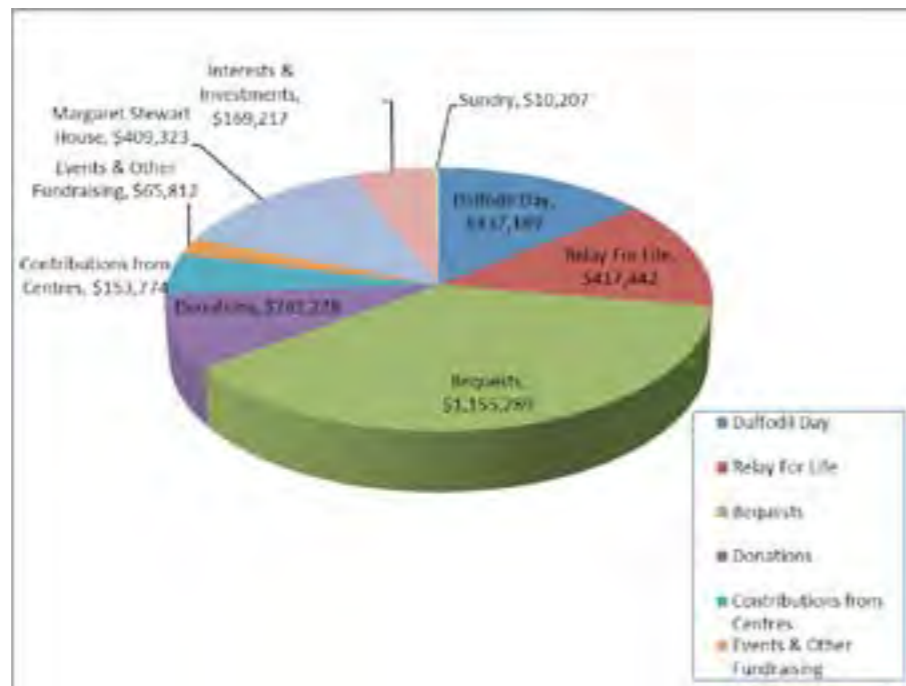
Each year, demand for our services continues to grow as people seek to be better informed about cancer. We expect demand to rise even further in coming years as the proportion of aging New Zealanders increases.

HIGHLIGHTS OF THE YEAR

- Total fundraising income received during the past financial year for the Wellington Division was \$2,357,960
- The 21st Anniversary of Daffodil Day raised \$437,189
- Total of \$1,155,289 was received by way of individual bequests
- 88 teams and 2450 individuals took part in Relay For Life and raised over \$417,442
- An estimated 500 survivors and carers walked the Opening Lap at Relay
- A total of \$635,000 was raised in support of research

The Cancer Society Wellington Division has been well supported throughout the year by donations from individual donors and businesses. Our bequest income has also been strong, and these legacies help secure our future services and enable us to ensure we can meet the ever increasing demand. This financial year bequests contributed \$1.1 million to the Society's work.

2011/12 INCOME



Special events continue to provide significant income and raise awareness of who we are and what we do. Volunteers enable us to keep our costs down and ensure the donor dollar goes where it is intended.

Communication with our supporters is important to us and we endeavor to be as effective as we can with our promotions and communications. Our quarterly newsletter, CanNews, keeps our supporters and donors informed and up to date with what is happening in our Division. We continue to work through a very active programme of talking to special-interest groups within the community, telling them about the organisation and the large range of services and programmes we have available for cancer patients, their families and whānau.

SPECIAL EVENTS

DAFFODIL DAY, FRIDAY 26 AUGUST 2011

Daffodil Day is the flagship appeal for the Cancer Society and is held on the last Friday of August each year.

2011 marked the 21st Anniversary of Daffodil Day, and over \$437,189 was raised in the Wellington area.

We are most grateful to the National Bank, Principal Sponsor of Daffodil Day. The valuable support and assistance of their management and staff provides the platform and foundation for Daffodil Day.

The significant volunteer support and assistance the Society receives with so many aspects of the pre-planning and collection phase of Daffodil Day is another vital element. It would be impossible to bring the event to fruition without the help of volunteers.



We are indebted to the 45 Volunteer Area Coordinators who mobilised over 750 street collectors across greater Wellington. Eighty-five schools took part in fundraising, and 200 businesses offered to put our display boxes on their counters.

Five hundred fresh flower sales were made to businesses by volunteer telemarketing teams, and a team of volunteers from Transpower spent a day bunching and preparing them for delivery.

RELAY FOR LIFE 2012

We are again pleased to announce another thoroughly successful Relay For Life season in 2012.

This year the Wellington Division held Relays in Nelson, Porirua and Wellington. All three events demonstrated the overwhelming commitment and passion our local communities have for Relay For Life. In total almost 5000 people took part and an amazing \$700,000 was raised overall.

It was Porirua's second Relay and with a unique Pacifica flavour the community came together to celebrate their survivors and carers and to remember loved ones lost.

It was a nervous time for Nelson in the days leading up to their Relay. With a 'weather bomb' predicted, emergency contingency plans were in place and fingers were well and truly crossed. As Wellington and parts of the upper South Island were buffeted by stormy weather, Nelson miraculously was spared and Relay went ahead in chilly but fine conditions.

Wellington celebrated its 10th Relay in real style. Perfect weather and a record number of participants set the scene for what was to be a truly remarkable event. Stilt walkers, fire eaters, drummers and numerous singers and performers all gifted their time and talents to keep the relayers entertained.



Over 100 volunteers contributed their skills and time to ensure participants had an enjoyable Relay experience. They packed 2490 team kits, cut 500 sashes, directed 400 cars in and out of the park, kept the track safe, sold merchandise, put out 1000 metres of fencing and 300 cones, cooked breakfast and helped with the cleanup at the end. Quite simply we couldn't put on an event this size without the help of volunteers, and we thank each and every one of them for coming on this relay journey with us.

But mostly, we would like to thank everyone who participated in Relay For Life. To all our team captains and team members - thank you for your commitment, for your passion and for sharing in our vision of a cancer free future.

Premier sponsorship was received from MORE FM with over \$100,000 of free air time donated as well as on-site coverage all Relay weekend. Supplementary sponsorship was received from Transpower Ltd, Wellington Waterfront Limited, City Fitness, and Mitre 10 Mega. EZIBUY provided national support with discounted t-shirts, and Soar Print provided free printing for all 17 Relays held around New Zealand. Caffe L'Affare and Dusted 'n Delicious provided catering for the Survivor's Celebratory Afternoon Tea.

NZ HOUSE & GARDEN TOURS 2012

Around 50 beautiful homes and gardens across the country opened their doors to more than 5,000 visitors in March for the *NZ House & Garden Tours 2012*, raising over \$300,000 for the Cancer Society of New Zealand and Look Good Feel Better.

Along with Auckland and Queenstown, the Kapiti Tour was a sell-out success. Visitors were given a sneak-peek into such intriguing and inspirational homes as the iconic dome house of Fritz Eisenhofer, and the subtropical garden paradise of Frank Boffa. A wonderful day was also had by those celebrating the return of the event to Canterbury following the devastating earthquake last year.

We are sincerely grateful to NZ House & Garden for sponsoring the event, and of course our special thanks to the home owners, volunteers and those who attended the day in support of our cause.



FUNDRAISING EVENTS ORGANISED EXTERNALLY

The Cancer Society is approached on a regular basis by well-meaning people in the community who want to organise a fundraising event in support of the Society.

During the past year we have been fortunate to benefit from some unique fundraising events and activities which

have been organised by some special people. We extend our sincere thanks and appreciation to these supporters:

- Mike Butler and his two trusty dogs, Rapid and Ella, hiked from Christchurch to Nelson, covering 2323 kilometres. Mike's Hike for Cancer raised over \$22,000
- Greig Wilson took on the ultimate challenge, the Taupo Ironman and raised over \$3,500
- Luke Slotemaker decided to quit smoking, get fit and raise some money for the Cancer Society. He biked around the top of the South Island and raised over \$600
- Mike Wicksteed ran the Paris Marathon in memory of his good friend Graham (GT) Langridge who sadly died after a long but feisty battle with cancer. He raised over \$1,650 for the Cancer Society
- Leanne was diagnosed with breast cancer and when she started her chemo treatment she decided to shave her head to raise money for the Cancer Society. Leanne raised over \$1,300.
- Early Years Connolly Street whānau held their own mini-Relay For Life and raised \$2,885



We are sincerely grateful to everyone who chose to support the Cancer Society during the past financial year. With the benefit of sustained philanthropic support, the Society is able to continue working with our communities to reduce the incidence of cancer and ensure best cancer care for everyone.

Helen Montgomery
Manager Fundraising & Communications

Nelson Centre

Nelson Centre is flourishing; continually busy, workloads grow, as does our community. No day is ever the same, it's always invigorating.

FUNDRAISING



Thackwood Garden Open Day Fundraiser 6th November, 2011

The day began overcast but by opening time the weather was perfect for the 85 visitors. The two acre English Cottage Garden has interesting tracks leading down to a large pond along with garden seats, archways, hidden pathways, terraced banks, box hedges, lemon groves and formal areas along with the Cherry Walk and many surprises. You could spend all day there, and many took a picnic lunch. As a first time fundraiser, this was a great success, raising \$437.

RELAY FOR LIFE 3-4 MARCH 2012

Along with 98 teams, the proceedings began with snow on the ranges; we all knew we were in for a cold night. Over 270 Survivors and Carers attended a reception and the five Nelson Mail 5 faces/stories for our 5th Relay, cut the opening ribbon, which was followed by our Survivors and Carers walking the first Opening Lap. The Candlelight Ceremony, conducted by Tony Barnett and soloist Adele Terrill, was truly spine-tingling. Entertainment was well received, varied and enjoyed by many teams and visitors. What a tremendous effort from the committee, team captains, people in the community, and sponsors! Many friendships were made and precious moments enjoyed. It was a fantastic atmosphere. The final result saw \$177,932 raised.

CANCER SOCIETY CHARITY BALL 2011

The "Nelson Ball of the Year", our second charity ball, had been much anticipated by many local people. They weren't disappointed! Guests gathering at The Rutherford Hotel were served a beautiful three course meal accompanied by excellent local wines, during which we had a lively auction of some amazing goods, including tickets to the World of Wearable Art Awards Show, works by local artists



Ball attendees - from left, Sue & Richard Kempthorne, Alison McAlpine (Executive Member), Bill Findlater (President)

and wonderful dining experiences. Local band "Reflections" provided the music, and the floor was filled to capacity for the rest of the evening. Through all the glitz and glamour we were able to raise \$24,780 for our local services.

DAFFODIL DAY

Daffodil Day was fine and sunny, helping our volunteers bring in another fantastic total. Despite difficult times, we still managed to raise more funds than in the previous year. Our thanks as always go to the many local businesses and individuals who supported all of these events.

SUPPORT AND INFORMATION

Living Well - We had two programmes in 2011 and these were enjoyed by 46 people.

Look Good Feel Better- 66 attendees enjoyed being pampered for the afternoon.

Partners/Carers Support Group - Run quarterly and courses are much appreciated by the attendees.

Swimming Group - On Friday afternoons this growing group enjoys the company and exercise.

Cancer Update - This year Professor Koczwara, Medical oncologist and Director of Cancer Services at the Southern Adelaide Health Services spoke to a large crowd of over 200, with standing room only.

Prostate, Breast and Lymphoedema, and Meditation groups are kept busy.

We held a morning for Gynaecological patients - another first; attendees were privileged to have Oncologist Kate Gregory present and they also received a relaxing hand massage.

HEALTH PROMOTION

Shade Loan - 41 local events, using our marquees and umbrellas and stands. Our sunscreen sales were similar to last year.

Smoking Cessation training -Included introductory and enhanced Motivational Interviewing. Held September/October 2011, these had 38 attending over the two days.

VOLUNTEERS

22 people attended training day in June 2011. This year we had several doing driver training including guidance from a physiotherapist who spoke about transferring patients to and from vehicles and a driving instructor who took us through new rules. We were fortunate to have Ann Hodson, Manager Volunteering, and Fiona Pearson, Manager Information and Support facilitate for us. These volunteers are now actively working with us in a variety of tasks.

Our volunteers for Relay For Life were once again amazing. Approximately 50 worked tirelessly for months on end to bring this all together for an incredible event.

Each week volunteers assist with two very busy days at the Chemo clinics, helping the nurses, patients and carers with lunch, drinks and company.

I am very grateful for the support our talented, committed Executive Committee members bring to our organisation.

All volunteers are precious gems and I thank you all very much. What an amazing bunch of people! "You make a living by what you get but you make a life by what you give" (Winston Churchill).

Linda Lucre
Centre Manager
Nelson Centre

Marlborough Centre

Cancer Society Marlborough staff and volunteers have had a busy, interesting and successful 2011/12 year; fundraising, promoting and providing services and programmes within our community. Some highlights of the year are:

FORREST ESTATE GRAPERIDE 2012

This annual event relies on a dedicated volunteer team, ably coordinated by Pru Jensen, who put together entrant packs and managed registrations for the 2500 participants over two days. This continues to be an important fundraiser for the Cancer Society, raising our profile in the community and allowing us to promote our SunSmart and exercise messages. It also recognises cancer survivorship, with a special Cancer Survivors short race as well as a prize for the first Cancer Survivor home in the main event.

SMOKEFREE YOUTH AMBASSADORS

A group of teenagers have made a huge impact in Marlborough and nationally with their SmokeFree message. It started in 2011 when they joined us at Relay For Life and performed a rap and smokefree lap.

They have since gone on to present an innovative and thought-provoking submission to the Marlborough District Council, to encourage the Council to move forward with the 2025 Smokefree vision by making parks, playgrounds and other public outdoor areas SmokeFree.

Cancer Society Marlborough subsidised Robert Hutchinson, the Council's Officer in Charge of Parks, Reserves and Open Spaces to attend the University of Otago's SmokeFree Outdoors Forum in Wellington. This has led Robert to taking charge of this initiative, pressing forward with the plan to erect signage at parks and playgrounds throughout Marlborough, to promote a SmokeFree outdoors environment.



Volunteer Picnic 2011



Smokefree Youth Ambassadors pictured with Hon. Tariana Turia

SKIN AWARENESS CLINIC

Earlier this year, Cancer Society Marlborough held their twenty fifth annual skin awareness clinic in both Picton and Blenheim.

The attendance for both was considerably up on recent years. Over 75% of those who attended had not had previous skin cancers and sought advice on perceived skin changes of concern and general advice on when to consult a doctor. Anecdotally people reported that they found the clinics very useful, providing an affordable and educative service around skin care and when to act on changes.

The clinic is also an opportunity for 5th year medical students involved in the Otago School of Medicine Rural Immersion Programme, to sit in with the specialists and GPs present and gain knowledge about skin conditions.

The clinic was well supported by visiting and local clinicians and a great team of volunteers.

CANSURVIVE

We continue to work at developing appropriate and diverse concepts to support cancer survivors. We now have three active CanSurvive groups, comprising over sixty survivors and partners, who meet regularly for informal social contact. Most have participated in a Living Well course and find this way of continued contact very supportive as they cope with the ongoing challenges in everyday life that a cancer experience brings.

Te rangimarie ki a koutou.

Margot Wilson
Manager, Support & Information Nurse, Marlborough

Wairarapa Centre

They say cancer never sleeps, and that certainly seems to be the case if we consult our client database. In an environment where we would dearly like to do ourselves out of a job, sadly we are a long way off goal. There are more people these days living through the journey - if we cannot yet eliminate cancer from our world - at least we can make it a smoother ride for all concerned. This is top priority at Cancer Society Wairarapa.

The past year has seen a heightened emphasis on health promotion campaigning in Wairarapa, largely within the framework of the Wairarapa Health Promotion Network. Planning promotional activity in a collegial manner, across all stakeholders with an interest in health, is an effective way of strategically reducing costs and improving outcomes. We might not yet be able to eliminate cancer, but if we can ensure our community looks after their health and presents early with symptoms we are doing the best we can.

Cancer impacts on each and every one of us. As Kiwis, even if we are fortunate enough not to have a family member or close friend diagnosed we all know someone who does. We live in a small world, and a teeny tiny country - the impact of any diagnosis is profound. Where people were once able to discreetly keep their illness secret, should they wish to, these days it is far more common that a cancer diagnosis will become public knowledge. One benefit of the dwindling privacy we are starting to experience in this 'new era' - the world of social media - is that support is never far away.



Wairarapa "Our People Our Future Our Choice" Smokefree graphic, painted by Jared McDowell

Even if a patient and their family are not familiar with Cancer Society Wairarapa Support Services, chances are they will be led our way. And as each new referral comes into the Centre and the patient database swells, we might recognise we haven't yet found that cure and done ourselves out of a job, but at least we know we are making a sizeable dent in the impact it casts on the community.

Anna Cardno
Manager
Cancer Society Wairarapa



Wairarapa Smokefree Youth Ambassadors record their Smokefree Day radio ad at More FM



Fiona Elton and her family.

Cancer Society support services were my signpost home.....

When I was first diagnosed with breast cancer, it took a long time to sink in. "I have a husband and three children. This is not how my life is meant to be"... I made it through, as you do, and then the cancer came back. It had appalling timing, as life was in the middle of throwing us all some enormous curve balls and more cancer was the last thing we needed. We were in no position to fight another round.

Cancer Society Wairarapa quickly became important to us. The support services it offered my family and me were crucial to us getting through. The counselling gave us all perspective, workshops and support groups gave me strength, and joining the Cancer Society Wairarapa Dragon Boat Team gave me purpose. I registered a team in Relay For Life, and my family was honoured to carry the Banner of Hope and lead the Survivors Lap. We'll be there again next year too.

The Cancer Society's support services are critical - crucial - to who a patient becomes once cancer has taken away who they once were. I am incredibly grateful to the Wairarapa Centre for helping us to find ourselves again after cancer.

Fiona Elton

Kapiti Office

The Kapiti Office continues to provide Cancer Society services to the Kapiti community. The services are in conjunction with divisional and national guidelines and resources. The main feature of the service is the ability of the Kapiti community to access these services locally.

The Support and Information programmes delivered locally consisted of two Living Well, Tai Chi Qigong mind/body exercise programmes and an end-of-year function, Surviving and Thriving. Personal, professional client contact and enquiry have been continued on a daily basis and directed according to need. It is noted that the client contact and need is very varied in circumstance and on the increase.

The Health Promotion services SunSmart, Smokefree and Men's Health continue at the community level, with the main focus being on men's health awareness and the CanWork project with volunteer/workplace involvement, and provision of the CanQuit Smoking Cessation programme for health professionals.

The transport service provided and coordinated by volunteers is a vital and valued service as is the patient visiting service. Key volunteers have been involved with office administration, shade loan scheme, skin awareness checks and, of course, a successful Daffodil Day collection.



Click to close the Tool Kit

As well as the Daffodil Day fundraising event, the NZ House and Garden tour of Kapiti and Horowhenua gardens, which showcased some interesting and beautiful properties, was a highlight.

The Cancer Society in Kapiti is regarded as a 'lead community service', and the involvement in community meetings and networks such as the Kapiti Social Services Group, Transport Governance Committee and contact with Māori Health providers have been maintained throughout the year.

Judy Dickie
Kapiti Coordinator



Judy Dickie, Kapiti Coordinator and David Hicks, Men's Health Ambassador.

AUDIT REPORT

INDEPENDENT AUDITOR'S REPORT ON THE SUMMARY FINANCIAL STATEMENTS TO THE EXECUTIVE COMMITTEE OF THE CANCER SOCIETY OF NEW ZEALAND WELLINGTON DIVISION INCORPORATED

Report on the Summary Financial Statements

The accompanying summary financial statements of Cancer Society of New Zealand Wellington Division Incorporated on pages 26 to 27, which comprise the summary statement of financial position as at 31 March 2012, and the summary income and expenditure statement, summary statement of changes in equity and summary statement of cash flows for the year then ended, and related notes, are derived from the audited financial statements of Cancer Society of New Zealand Wellington Division for the year ended 31 March 2012. We expressed an unmodified opinion on the financial position and a qualified opinion on the financial performance and cash flows on those financial statements in our report dated 25 June 2012.

The summary financial statements do not contain all the disclosures required for full financial statements under generally accepted accounting practice in New Zealand. Reading the summary financial statements, therefore, is not a substitute for reading the audited financial statements of Cancer Society of New Zealand Wellington Division Incorporated.

This report is made solely to the Executive Committee, as a body, in accordance with Section 14 of the Rules. Our audit has been undertaken so that we might state to the Executive Committee those matters we are required to state to them in an auditor's report and for no other purpose. To the fullest extent permitted by law, we do not accept or assume responsibility to anyone other than the Trustees, as a body, for our audit work, for this report, or for the opinions we have formed.

Executive Committee's Responsibility for the Summary Financial Statements

The Executive Committee is responsible for the preparation of a summary of the audited financial statements, in accordance with FRS-39: *Summary Financial Reports*.

Auditor's Responsibility

Our responsibility is to express an opinion on the summary financial statements based on our procedures, which were conducted in accordance with International Standards on Auditing (New Zealand) (ISA (NZ)) 810: *Engagements to Report on Summary Financial Statements*.

Other than in our capacity as auditor, we have no relationship with or interests in Cancer Society of New Zealand Wellington Division Incorporated .

Opinion

In our opinion, the summary financial statements derived from the audited financial statements of Cancer Society of New Zealand Wellington Division Incorporated for the year ended 31 March 2012 are consistent, in all material respects, with those financial statements, in accordance with FRS-39: *Summary Financial Reports*.

In common with other organisations of a similar nature, controls over revenues from donations, appeals, fundraising and bequests prior to being recorded are limited, and there are no practical audit procedures to determine the effect of these limited controls.

In our opinion on the audited financial statements, dated 25 June 2012, we expressed an unmodified opinion on the financial position and a qualified opinion on the financial performance and cash flows. In our opinion, except for adjustments that might have been found to be necessary had we been able to obtain sufficient evidence concerning donations, appeals, fundraising and bequests, the financial statements present fairly, in all material respects, the results of operations and cash flows for the year ended 31 March 2012 and the financial position as at that date in accordance with generally accepted accounting practice in New Zealand.



Chartered Accountants
25 June 2012
Wellington, New Zealand

FINANCIAL REPORT

YEAR ENDED 31 MARCH 2012

Audit Report	Page 25
Income and Expenditure	Page 26
Summary Statement of Changes of Equity	Page 26
Summary Statement of Financial Position	Page 27
Summary Statement of Cash Flows	Page 27

INCOME AND EXPENDITURE FOR THE YEAR ENDED 31 MARCH 2012

2011		2012
\$		\$
	Income received from:	
459,461	Daffodil Day	437,189
333,559	Relay for Life	417,442
1,333,646	Bequests	1,155,289
273,475	Donations	282,228
218,449	Events & Other Fundraising	65,812
375,220	Accommodation - Margaret Stewart House	409,323
260,969	Interest & Dividends	239,159
(10,209)	Realised gains (losses) on sale of Investments	(69,942)
153,600	Contributions from Centres & Auxiliaries	153,774
8,432	Sundry	10,207
3,406,602	Total Income	3,100,481
	Income was spent on:	
552,339	Medical & Scientific Research	635,064
421,173	Administration	466,896
753,804	Fundraising & Communications	590,659
540,109	Health Promotion	555,359
762,652	Support & Information	867,284
208,380	Accommodation - Margaret Stewart House	222,636
179,888	Volunteer Services	157,296
3,418,345	Total Expenditure	3,495,194
(11,743)	Net (Deficit) Surplus before unrealised gains or losses	(394,713)
96,014	Unrealised Investment gains (losses)	(174,829)
84,271	Net (Deficit) Surplus for the year	(569,542)

SUMMARY STATEMENT OF CHANGES IN EQUITY

FOR THE YEAR ENDED 31 MARCH 2012

2011		2012
\$		\$
8,788,247	Opening Balance	8,875,869
84,271	Surplus (Deficit) for year	(569,542)
3,351	Transfer to Restricted Funds	3,469
8,875,869	Closing Balance	8,309,796

SUMMARY STATEMENT OF FINANCIAL POSITION AS AT 31 MARCH 2012

2011		2012
\$		\$
	Funds	
8,776,776	General Funds	8,207,234
99,093	Restricted Funds	102,562
8,875,869		8,309,796
	Represented by:	
992,504	Current Assets	1,127,932
432,847	Less: Current Liabilities	662,837
559,657	Net Current Assets	465,095
	Non-Current Assets	
3,539,185	Fixed Assets	3,411,471
4,777,027	Investments	4,433,230
8,316,212	Total Non-Current Assets	7,844,701
8,875,869	Net Assets	8,309,796

25th June 2012

Roy Cowley
Chairman of Executive Committee

Michael Smith
Chief Executive

SUMMARY STATEMENT OF CASH FLOWS

FOR THE YEAR ENDED 31 MARCH 2012

2011		2012
\$		\$
218,443	Net cash from Operating activities	8,585
(350,080)	Net cash from Investing activities	144,465
(131,637)	Net Increase(decrease) in cash	153,050
939,684	Cash at the beginning of the year	808,047
808,047	Cash at the end of the year	961,097

A full set of audited financial statements are available on request from the Cancer Society of New Zealand Wellington Division.

WELLINGTON DIVISION STAFF

Roger Taylor (until 26/12/11)	Divisional Manager
Michael Smith (from 04/01/12)	Chief Executive Officer
Fiona Pearson	Assistant Divisional Manager / Manager Support & Information Manager Volunteering Manager Health Promotion Manager Fundraising & Communications Receptionist Health Promotion Co-ordinator Events & Promotions Co-ordinator Communications & Database Co-ordinator Housekeeper Cancer Information Nurse & CanTalk Editor Accounts Administrator Accounting Advisor Cancer Information Nurse Kapiti Office Tobacco Control Advisor Masseur Supervisor - Margaret Stewart House Cancer Information Nurse Counsellor Counsellor Administrative Support Volunteer Unit Administration Support Administrative Support Volunteer Unit CanSupport Programme Co-ordinator CanSupport Programme Co-ordinator CanWork National Co-ordinator
Ann Hodson	
Raewyn Sutton	
Helen Montgomery	
Janet Stevens	
Leanne Toledo Cortés	
Rachael Hadwen	
Bing Liu	
Frances Connor	
Sue Corkill	
Sarah de Groot	
Kathryn Dent	
Julie Holt	
Judy Dickie	
Corrienne Simpson	
Bobbie-Joe Wilson	
Edwina Tyree	
Naena Chhima	
Mary Wilson	
Margaret Alve	
Barbara Maré (until 02/12/11)	
Rita Klus	
Caroline Down (from 13/10/11)	
Virginia Lee	
Hazel Naser	
Steve Kenny	

CENTRE STAFF

Anna Cardno	Wairarapa
Jenny Marfell	Wairarapa
Jacinta Buchanan	Wairarapa
Margot Wilson	Marlborough
Hilary Gill	Marlborough
Teresa Goza	Marlborough
Margaret Tepania	Marlborough
Linda Lucre	Nelson
Sue Benson	Nelson
Sue Chapman	Nelson

EXECUTIVE OFFICERS OF THE CENTRES

NELSON

President	Bill Findlater
Secretary	Maree West
Treasurer	Mr Ian McLennan

MARLBOROUGH

Chairperson	Mark Foley
Vice Chairperson	Stephen Vallance
Secretary	Margaret Tepania

WAIRARAPA

Chairperson	Susan McWilliam
Deputy Chair	Anne Savage
Secretary/Treasurer	George Murdoch

AUDITORS

Deloitte Touche Tohmatsu

HOW YOU CONTACT US

WELLINGTON DIVISION	KAPITI REGION OFFICE	NELSON CENTRE	MARLBOROUGH CENTRE	WAIRARAPA CENTRE
Richard Evans House 52 Riddiford Street (opposite Wellington Hospital) Newtown, Wellington PO Box 7125 Wellington 6242 T (04) 389-8421 F (04) 389-5994	Kapiti Community Centre 15a Ngahina Street Paraparaumu PO Box 23 Paraparaumu 5254 T (04) 298-8514 F (04) 298-5014	76A Waimea Road Nelson PO Box 335 Nelson 7040 T (03) 539-3662 F (03) 546-3919	The Forum Building Market Street Blenheim PO Box 233 Blenheim 7240 T (03) 579-4379 F (03) 579-4381	140 Dixon Street Masterton PO Box 121 Masterton 5840 T (06) 378 8039 Manager DDI T (06) 378-8040 F (06) 378-8042

WEBSITE: www.cancersoc.org.nz

FACEBOOK: facebook.com/cancersocietywellington